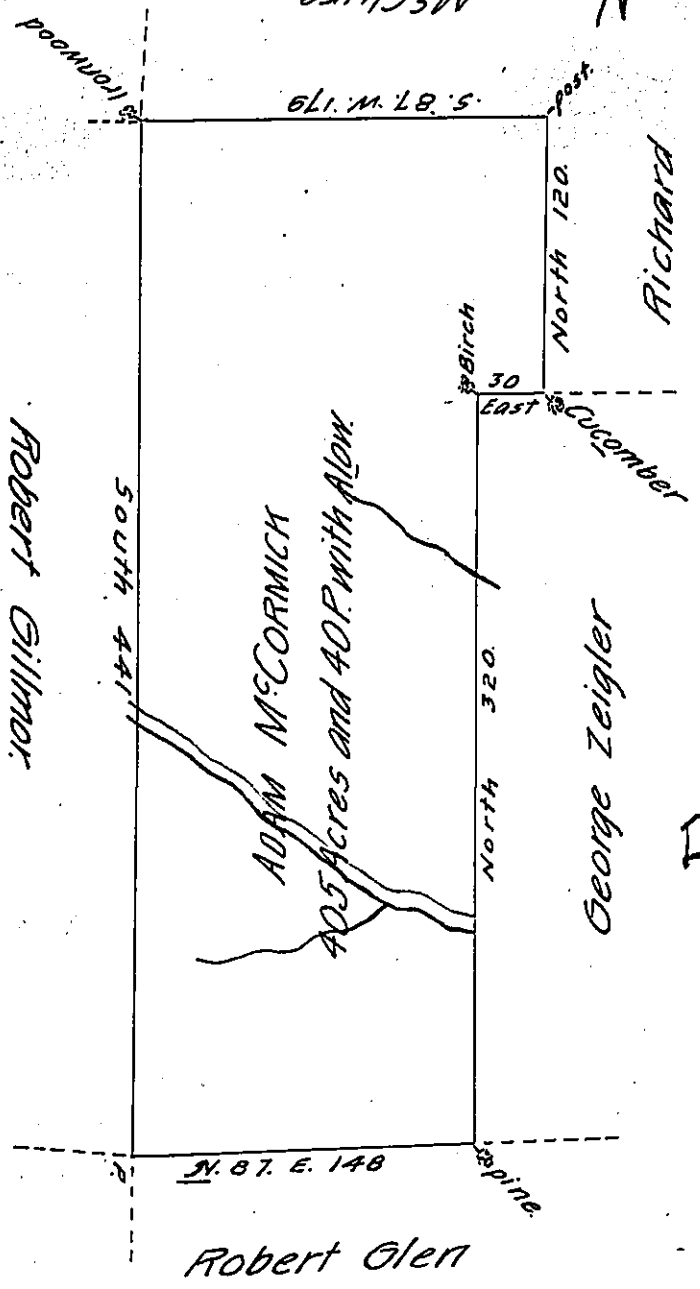


N-80

McClure



C 83-141

D-8 277

Situate in Wolfcreek Township, Mercer County on the Waters of Wolfcreek  
 Containing four hundred and five Acres and forty parches with Allowence for  
 Roads &c<sup>o</sup>. Surveyed August 27<sup>th</sup> 1805, in pursuence of a Warrant Grant-  
 ed to Adam M<sup>c</sup>Cormick Dated March 13<sup>th</sup> 1805.

John Findley, D. S.

To Sam<sup>l</sup> Cochran, Esq<sup>r</sup> S. G.

IN TESTIMONY that the above is a copy of the original remaining on file in  
 the Department of Internal Affairs of Pennsylvania, made  
 conformably to an Act of Assembly approved the 16<sup>th</sup> day of  
 February, 1833, I have hereunto set my Hand and caused  
 the Seal of said Department to be affixed at Harrisburg,  
 this eleventh day of January 1906.

*Laack Brown*  
 Secretary of Internal Affairs.